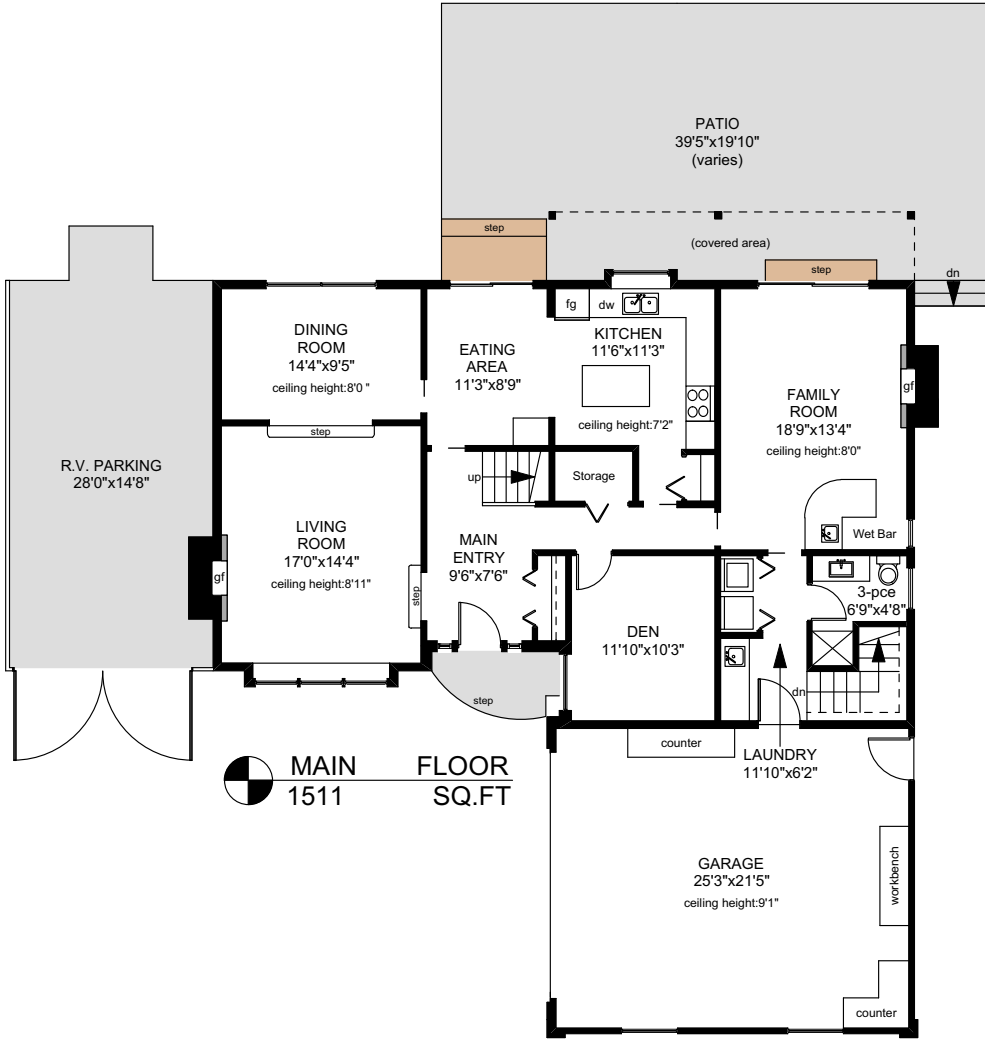
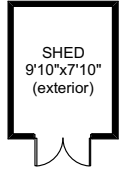


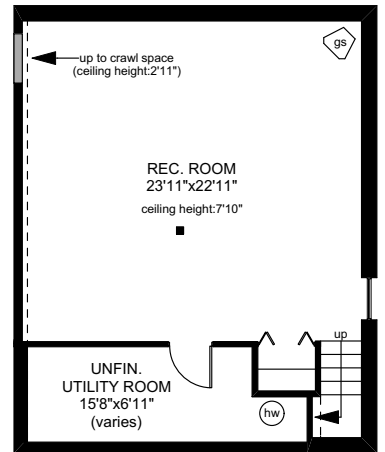
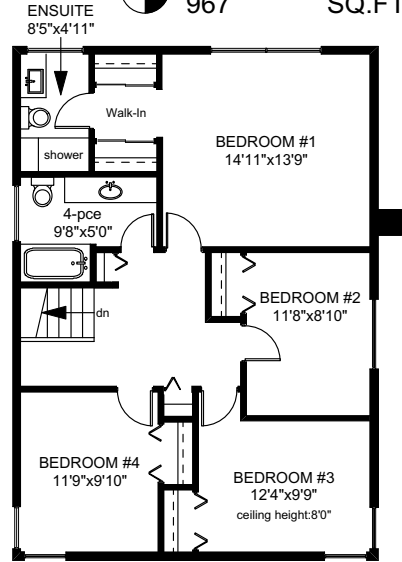
1177 LUCILLE DRIVE

(not in exact location)



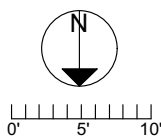
MAIN FLOOR
1511 SQ.FT

UPPER FLOOR
967 SQ.FT



LOWER FLOOR
823 SQ.FT

	FINISHED SQ. FT.	UNFINISHED SQ. FT.	TOTAL SQ. FT.
MAIN	1511	0	1511
UPPER	967	0	967
LOWER	674	149	823
TOTAL	3152	149	3301
GARAGE	0	580	580
SHED	0	77	77
PATIO	0	733	733



PREPARED FOR THE EXCLUSIVE USE OF
PHILIP NYREN OF MACDONALD REALTY Ltd.

MEASURED ON: 04/24/18
DRAWING FILE: 17160

Tafmeasure VICTORIA, B.C.
Ph. 883.8894
www.tafmeasure.com